

OFFICIAL CLUB BROCHURE 2026 – 2027



CATALINA

CLUB



CONTENTS

- 4 Welcome
- 6 Catalina Club – A Century of Excellence
- 8 About the Club & the Course
- 10 Stay & Play
- 14 Catalina Clubhouse
- 16 1920 Restaurant
- 18 Athol's Bar
- 20 Gift Shop
- 24 Course Tour
- 30 Golf Shop & Tuition
- 32 How to Join
- 34 Member Benefits
- 36 Special Golf Events
- 38 Junior Golf
- 40 Visitors & Social Golf
- 42 How to Find Us



14 Ellis St, South Yarra VIC 3141

T 03 7045 5189

E info@premierpublishing.com.au

W www.premierpublishing.com.au

Catalina Club and Premier wish to thank the advertisers who appear in this publication for their support and wish them every business success. The contents of this brochure are believed to be correct at the time of printing, nevertheless, we cannot endorse and readers should not rely solely upon the accuracy of any statements or claims contained herein without prior consultation with the service provider.



CATALINA

CLUB



WELCOME

WELCOME TO CATALINA CLUB THE PERFECT PLACE TO BEGIN YOUR COASTAL ESCAPE.

For more than a century, golf has been at the heart of Batemans Bay, shaping the spirit of the South Coast and creating a place where community, competition, and coastal leisure come together.

Since 1920, Catalina Club has welcomed members and visitors to enjoy exceptional golfing and social experiences in one of Australia's most scenic and unspoilt coastal destinations.

Today, Catalina's award-winning Top 100 Australian 27-hole course offers lush, irrigated fairways, true-rolling greens, and sweeping parkland views. The perfect place for competitive and social golf. Members enjoy a vibrant program of televised state tournaments, interclub pennants, weekly competitions, and year-round social play, while visitors are warmly invited to share the fairways and the relaxed, welcoming atmosphere the Club is known for.

Catalina proudly hosts several of the region's most prestigious tournaments, including the South Coast Open and Pro-Am, the Catalina Classic, and the Batemans Bay Open — events that draw golfers from across Australia to experience Catalina's unique coastal setting.

Beyond the course, the Clubhouse is a destination of its own. Recently refurbished with contemporary coastal styling, it offers a variety of spaces to relax and enjoy: Athol's Sports Bar, a large main lounge and cocktail bar, Young Percy's Café, and the acclaimed 1920 Restaurant, serving ever-changing lunches and award-winning dinners seven days a week.

Members are rewarded with the Catalina Rewards Loyalty Program, offering generous savings and bonus points across the bar, restaurant, café, and retail offerings from the Golf Shop and the all-new Gift Shop — the perfect way to make every visit feel even more special.

The Club is also proud to support the region through sponsorships, donations, and strong partnerships with local businesses, sporting clubs, schools, and charities.

Whatever brings you to Batemans Bay, the team at Catalina Club looks forward to welcoming you — to a place shaped by heritage, inspired by the coast, and made unforgettable by the people who gather here.



Batehaven DENTAL CARE

Whether you want to refresh your smile or look after your little ones teeth, at Batehaven Dental Care we provide a professional and personalized service that will help improve your overall dental health.

We offer a wide range of services from General Dentistry, Implants, Crown and Bridge work to Cosmetic Dentistry

New Patients Welcome

Over 14 years servicing the Batemans Bay community

Offering Free consultation with 3D scans for Implants

- Singular implant
- Multiple implants
- All on four implants
- All on six implants

Valued at \$340.00

*** conditions apply*



Call Us Today (02) 4472 6733 | www.batehavendentalcare.com.au

CATALINA CLUB

A CENTURY OF EXCELLENCE, A NEW ERA UNFOLDING

A LANDMARK TIMELINE SHAPING ONE OF
AUSTRALIA'S GREAT COASTAL GOLF DESTINATIONS.



- 1920**
BEGINNINGS ON BILL'S PADDOCK
Catalina's story begins as a humble 5-hole oiled sand green course framed by Percy Bill's local racing track. Grazing cows act as the first greenkeepers. Early competitions are three loops of five holes.
- 1931**
ON THE MAP
The Sydney Morning Herald praises the club's Open Day as "one of the best along the Far South Coast," marking its emergence as a respected golfing venue.
- 1957-1961**
GRASS GREENS & EXPANSION
The course grows to nine holes, then becomes a full 18-hole grass course by 1961, signalling a new era for members and visitors.
- 1967**
A FULL 18-HOLE EXPERIENCE
Members enjoy the first complete 18-hole layout, crafted by leading designers of the era.
- 1976**
A FUTURE LEGEND APPEARS
During the South Coast Pro-Am, a young Greg Norman earns his first professional pay cheque at Catalina, finishing third behind Rodger Davis and Terry Gale.
- 1990**
THE THIRD NINE ARRIVES
A new nine holes is added, creating today's world-class 27-hole course, accommodating growing demand for competitive and social golf.

- 2019**
BUSHFIRE REFUGE — A COMMUNITY LIFELINE
During the devastating Australian bushfires, Catalina Club opens its doors overnight to shelter residents as fires sweep through the Bay. It becomes a vital place of safety and community solidarity.
- 2020**
CENTENARY & RESILIENCE
Catalina celebrates 100 years, just as global pandemic restrictions reshape sport. With golf one of the few activities permitted, membership surges — particularly among juniors seeking wellbeing, connection, and exercise.
- 2021-2026**
A NEW ERA OF TRANSFORMATION
Catalina embarks on a five-year continuous redevelopment plan, including a major course redesign by world-renowned golf architects behind some of the Southern Hemisphere's most celebrated modern courses. Clubhouse refurbishments and enhanced facilities elevate Catalina's status for locals, visitors, and travelling golfers.
- TODAY**
DESTINATION BY THE BAY
Renowned as a Top 100 public access course in Australia, Catalina Club combines its century-long heritage with contemporary vision. With expansive sun terraces overlooking spectacular parkland sunsets and kangaroos feeding at dusk, it remains the perfect place for competitive and social golf, dining, and coastal leisure.

ABOUT THE CLUB & THE COURSE

THE PERFECT PLACE FOR GOLF, NATURE, AND COASTAL LEISURE.

Catalina Club's 27-hole course – recently recognised among Australia's Top 100 Public Access Courses by Golf Australia and Inside Golf – is renowned for its meticulous presentation, where landscaped fairways create the feeling of walking on a green carpet beneath the region's mild coastal climate. Each of the three nines is exceptional, ensuring that whichever 18 holes you play, you are guaranteed a memorable and rewarding round.

The Club's longstanding commitment to excellence continues to shape every aspect of the experience. Today, Catalina welcomes more than 80,000 rounds of golf annually, maintaining pristine fairways and greens under the guidance of a course superintendent trained at both Royal Melbourne, Victoria Golf Club and Wimbledon – a testament to the skill and dedication of the entire ground staff.

Never content to stand still, Catalina engaged leading golf architect Harley Kruse of Kruse Golf Design to elevate the course even further. The Course Improvement Plan has already transformed the long par-4 15th, now defined by dramatic bunkering, expanded green complexes, and an array of new pin placements. Additional tee boxes enhance playability for golfers of all abilities – from relaxed social players to single-figure competitors.

Looking ahead, the course is entering a significant new chapter. A bold redevelopment program, commencing from 2026 through 2030, brings together globally renowned design teams Clayton, DeVries & Pont and KruseGolf, marking one of the most exciting course evolutions on the South Coast.

Across the layout, thoughtful tree management has opened playing lines, improved sunlight, and enhanced conditioning, enriching both aesthetic and playability while preserving the natural beauty of the site.

Nature remains an unforgettable part of the Catalina experience. Kangaroos graze freely across the fairways, while kookaburras, ducks, turtles, and diverse birdlife thrive among the waterways and tree lines. While many holes inspire, the iconic par-3 14th is often the favourite – a water carry framed by resident ducks and a sweeping mountain backdrop that leaves a lasting impression.

At Catalina Club, every round, every view, and every encounter with nature reinforces why this is the perfect place for golf on the South Coast.



We're here to help

Our team at Elders Insurance Batemans Bay live and work locally. We understand the challenges that businesses generally face, and we can help you explore our business policies to see what will work for you and your business needs.



Contact Sam Millynn to learn more.
02 4478 2377 Elders Insurance Batemans Bay



STAY & PLAY

SLOW DOWN, SETTLE IN, AND DISCOVER EVERYTHING THE SOUTH COAST HAS TO OFFER.

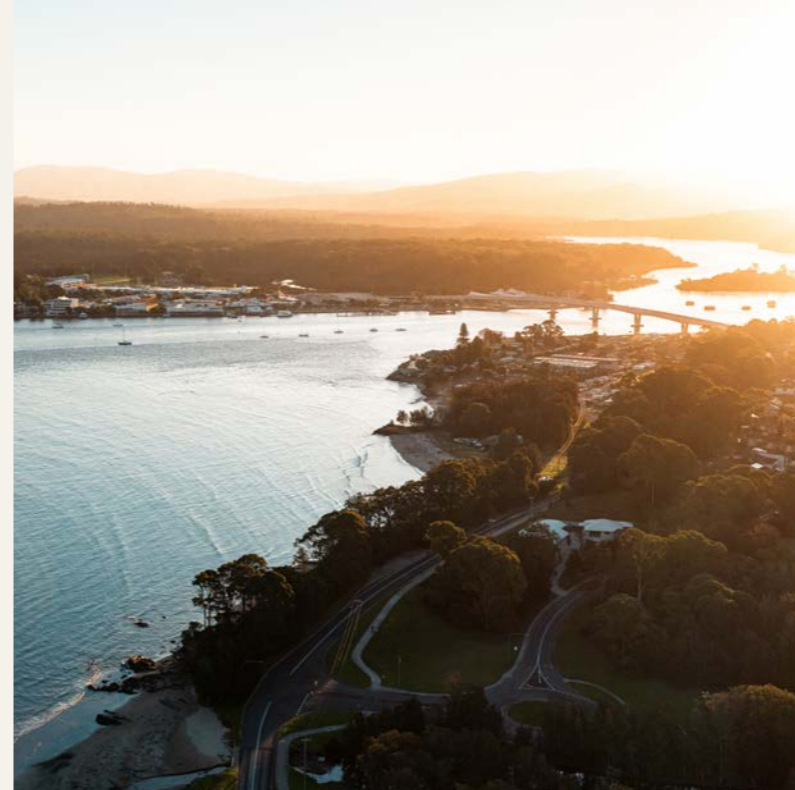
One day is never enough in the Eurobodalla. Framed by pristine beaches, winding rivers, and the natural beauty of the NSW South Coast, Batemans Bay is the perfect destination to unwind, explore, and reconnect. Whether you're visiting from Sydney, Canberra, Melbourne, or further afield, this natural haven offers the ideal setting for a restorative weekend escape.

WHERE TO STAY

Batemans Bay offers an exceptional range of stays, with something for every style of traveller — from premium hotels to boutique hideaways and immersive nature escapes. Just minutes from Catalina Club, you'll find:

- **Lincoln Downs Resort** — A refined, tranquil lakeside retreat offering spacious rooms, landscaped grounds, and a premium boutique experience.
- **The Isla** — A stylish, architecturally led motel reimaged for the modern traveller, perfect for those who love design, colour, and contemporary coastal vibes.
- **Casita** — A beautifully curated boutique stay with warm textures, intimate spaces, and a distinctly relaxed, Mediterranean-inspired aesthetic.
- **Oaks Ranch** — A secluded, character-filled country estate set on rolling pastures, offering horseback riding, a par-3 golf course, and a serene retreat-style atmosphere.
- **The Bower at Broulee** — Luxury eco-villas nestled in pristine bushland, designed for privacy, romance, and an immersive connection with nature.

With such a diverse collection of accommodation surrounding Catalina, you can craft your ideal South Coast escape – restful, adventurous, indulgent, or all of the above.



EXPLORE THE REGION

From golden-sand surf beaches to the sparkling Clyde River – famed for its oysters – the area is rich with coastal beauty and marine life. Visitors can enjoy:

- Whale watching and diving around the dramatic Tollgate Islands with Beneath The Bay
- Oyster farm kayaking tours with Region X
- Mogo mountain bike trails, for riders of all abilities
- Mogo Wildlife Park, home to exotic and endangered species
- Eurobodalla Regional Botanic Garden, a peaceful immersion in local flora

Members and guests can even win tickets to these standout experiences at Catalina Club's weekly raffles and trivia nights.

RELAX, REFRESH & SETTLE IN

After your round, unwind in the Clubhouse with a drink on The Terrace, overlooking the lush parkland course. Or settle into Athol's Sports Bar before indulging in a locally inspired meal at 1920 Restaurant.

Round out your stay with Catalina's vibrant off-course offerings – live music, special events, raffles, trivia, and seasonal entertainment.

Visit catalinaclub.com.au/whats-on to see what's on during your visit.



When it comes to creating a home that reflects your lifestyle, personality, and unique block of land, look no further than **Hotondo Homes Batemans Bay**.

As a proud, family-owned business with over 30 years of industry experience, our local team brings heart, knowledge, and precision to every build. Whether you're envisioning a compact single-storey home, a spacious double-storey design, or a dream home tailored to your lifestyle, Hotondo Homes has the expertise to bring it to life.

Specialists in complex projects, including sloping sites and knockdown rebuilds, we offer tailored solutions to suit every budget and vision. Our reputation is built on local insight, attention to detail, and genuine, friendly service to guide clients through every step of the home-building journey. With a strong focus on delivering quality outcomes, Hotondo Homes provides a seamless process from initial planning to final handover.



If you're looking for a builder who listens, understands, and is committed to delivering your ideal home, the team at Hotondo Homes Batemans Bay is ready to help turn your vision into reality.



BATEMANS BAY



Contact us today

15 Kylie Cres, Batemans Bay
02 4472 3655 | hotondo.com.au

Seacoast Homes Pty Ltd, Licence: 98369C

CATALINA CLUBHOUSE

YOU DON'T NEED TO BE SPORTY TO ENJOY CATALINA.

Step inside the recently refurbished Clubhouse and discover a space made for relaxing, connecting, and savouring the moment. From the casual comfort of the lounges and bars, to the vibrant energy of the cafe and terraces, or the elevated dining experience of Catalina 1920 Restaurant, there's a corner for every mood.

Sip a glass of wine or enjoy a cold beer as you take in the views. The Parkland Terrace and View Deck overlook the course, and late afternoons here are something special: wildlife wandering close, the sun dipping behind tree-lined fairways and distant mountain ranges. It's a scene that invites you to pause – every visit, every time – and is the inspiration for some of our locally-crafted fragrant candles available in the Gift Shop.

Our team is at the heart of the Catalina experience. Friendly, attentive, and deeply knowledgeable, they're ready to guide you – whether it's a treat from our bespoke bakery, a selection from one of the region's largest wine cellars, a cocktail crafted with care, or a signature dish from the restaurant.

Social membership starts at just \$10 a year. The benefits are immediate: members' pricing often pays for itself on your first visit, unlocking savings, rewards, and exclusive experiences.

Getting here is easy. Our Courtesy Bus runs daily from 4pm, ensuring a safe, convenient trip to and from the Club.

Catalina is a place for all ages. Little ones can enjoy our supervised children's space while adults unwind.

We never forget that the Club thrives because of our local community. Last year alone, we contributed over \$170,000 to charities, sporting clubs, and community groups. As a not-for-profit, giving back is part of who we are.

We're also proud supporters of the ClubsNSW ClubGRANTS scheme, which distributes more than \$100 million each year across NSW to community projects – another way we make sure the good our Club does reaches far beyond the fairways.

At Catalina, everyone belongs. Everyone's welcome. And there's always a seat waiting for you.



1920 – A NEW SEASON OF HERITAGE AND FLAVOUR

FROM ITS HUMBLE BEGINNINGS – A SMALL GOLF COURSE BUILT BY DETERMINED LOCAL HANDS – TO BECOMING A DESTINATION FOR GOLFERS FROM SYDNEY TO MELBOURNE, CATALINA HAS ALWAYS CARRIED A RICH STORY.

Even its name is steeped in history, recalling the mid-century seaplanes that once touched down on the estuary's shores.

Established in 1920, the club has thrived thanks to the people who built it and the community that continues to sustain it. It has been a second home for sports heroes, community leaders, and countless locals, each adding their own chapter to its story.

Our restaurant has long been a cornerstone of this experience – renowned for its warm hospitality, generous spirit, and culinary excellence. Now newly refurbished in a modern, contemporary style, 1920 offers a dining experience as inviting as it is memorable. With mezzanines, terrace dining overlooking the parkland course, and open fires in winter, every visit feels both elevated and relaxed.

The menu is award-winning, seasonal, and crafted with care – earning the Perfect Plate Award for two years running. From thoughtfully sourced local ingredients to culinary creativity on every plate, the flavours of 1920 reflect the very best of the South Coast.

For pizza lovers, our wood-fired menu runs seven days a week, with take-out available from 4.45pm each night – bringing a taste of Catalina to your table wherever you are.

Whether it's a leisurely lunch, a sunset dinner on the terrace, or a casual pizza with friends, 1920 Restaurant celebrates heritage, community, and flavour – inviting every guest to make their own mark on its story.



A NEW CHAPTER IN CLUB LIFE

WELCOME TO ATHOL'S BAR.

Our sports bar has been renamed in tribute to legacy, craftsmanship, and the quiet pride that shaped Catalina. Named after Athol Manns, one of our first groundsmen, the bar honours the Manns family and the spirit they wove through the course we enjoy today. This summer, we unveil a refreshed sports bar inspired by their memories. Every drink has been co-created with the Manns family, drawing on Athol's era: honest, characterful, and made with care – just like all our cocktails and mocktails.

Beyond Athol's, Catalina's bar experiences extend across the Club. The main bar features a dedicated cocktail station where classics and creative new concoctions are crafted with precision. Meanwhile, our cafe bar offers a curated selection of international wines and beers, perfect for a lighter, relaxed sip.

Catalina Club now hosts one of the largest wine cellars in the region, showcasing international and Australian wineries alongside boutique, family-owned vineyards. Our commitment to wine experiences is unmatched: free wine events follow every new seasonal menu launch, with our Head Chef demonstrating inspired pairings, and leading winery experts hosting ticketed multi-course degustation and guided wine flights.

Whether it's a sunset cocktail, a spirited catch-up at Athol's, or discovering something new from our cellar, the bars at Catalina Club offer spaces to connect, unwind, and savour the best of our heritage and hospitality.



**WHERE
LEGACY
LIVES
ON**

RAISING A GLASS TO THE MANN'S BROTHERS, CATALINA'S FIRST GROUNDSMEN. A NEW CHAPTER IN OUR STORY BEGINS. INSPIRED BY THE MEN WHO SHAPED OUR GREENS.

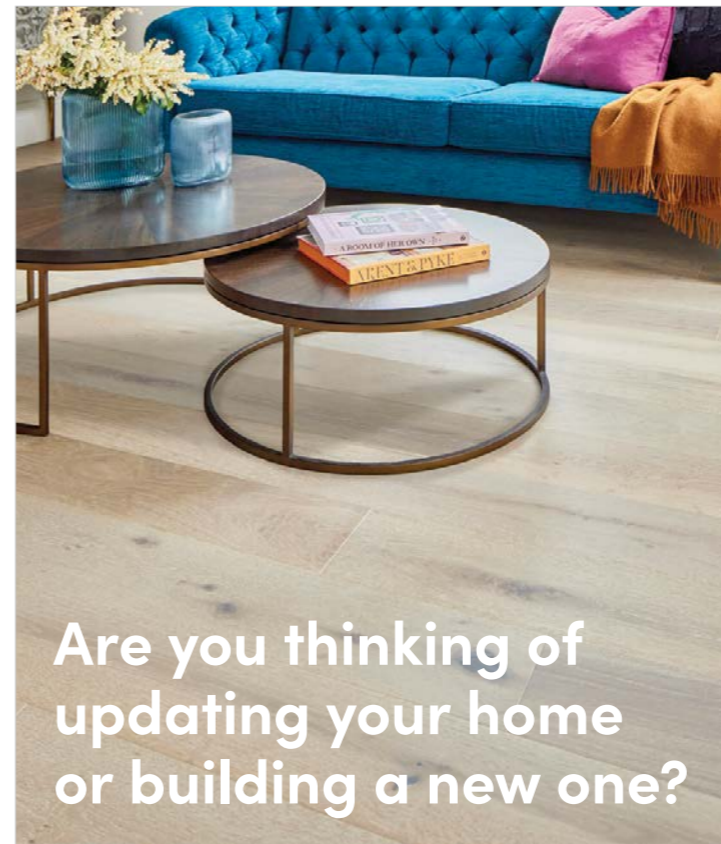
CAPTURING A CENTURY OF LEGACY ON THE FAR SOUTH COAST

Step into Catalina Club's new gift shop, nestled in the main entrance foyer, and discover a collection of treasures as unique as the Club itself. From locally sourced keepsakes to limited-edition pieces, from bespoke handmade items to exclusive collaborations, every gift is carefully curated to reflect the heritage and spirit of Catalina.

Explore home fragrances, golfing mementos, beautiful coffee table books, and rare wines – perfect for commemorating your visit to one of the Far South Coast's most distinguished golf and parkland clubhouse destinations.

Now, for the first time, we offer gift vouchers – an experience in themselves. Printed on a rare Heidelberg press built in 1920, the year Catalina Club was established, each voucher features aged gold foiling and embossed detailing only achievable on these antique machines. Paired with our collection of greeting cards showcasing the beauty of the Bay area, they make a truly special gift for any occasion.

Catalina Club's mercantile is a celebration of time, craftsmanship, and place – from 1920 to the modern day.



Are you thinking of
updating your home
or building a new one?

Choices Flooring Batemans Bay is a locally owned family business that cares about you and your experience.

We focus on what's right for you. With our extensive range of hard flooring & carpet we have the right products to suit you and your style.

Visit the team at **79 Princes Highway Batemans Bay** or call us on **4472 7001** and experience the difference.



The Difference



The difference between being in the neighbourhood and being one of the locals.

Established in the Eurobodalla for over 50 years. Book your sales or rental appraisal today.

Batemans Bay 02 4472 6455
Malua Bay 02 4471 2344
Moruya 02 4474 4433
Tuross Head 02 4473 6600
Narooma 02 4476 1000





CATALINA

CLUB



COURSE TOUR

HERE ARE A FEW USEFUL TIPS AND COURSE NOTES TO HELP YOU MAKE THE MOST OF YOUR ROUND AT CATALINA CLUB .

Distances shown below are from the blue tees. Experience more with a course flyover available on catalinaclub.com.au/course

HOLE 1, 297 METRES, PAR 4

A short opening par 4 dogleg right with OOB on the right side. Take a mid to long iron short of fairway bunker to leave a short iron approach to small putting surface. A generous Putting green awaits with relatively little undulation.

HOLE 2, 376 METRES, PAR 4

A solid tee shot down the left side to avoid the lone fairway bunker with Driver will leave a good mid-long iron to a narrow green well surrounded by bunkers. Read the putt from each angle as it can be a treacherous green to putt on at times.

HOLE 3, 481 METRES, PAR 5

A straightforward par 5 that demands your tee shot finds the middle to left of the fairway. Driver off the tee and a well-played lay-up will leave a short iron into a large green. For the longer hitters this is reachable and can open up a good birdie chance. The green is generous to approach from each side depending on where the flag is located.

HOLE 4, 349 METRES, PAR 4

A well thought out tee shot is imperative for placement down right side of fairway to avoid hazard and trees down the left. The green opens up, if you get past the corner, but there are many challenges on this subtly sloped green. Be aware of the water to the left and long of the green.

HOLE 5, 167 METRES, PAR 3

A strong par 3 with many protective features to the green. A small green surround by 2 bunkers and mounding makes it an interesting challenge.

HOLE 6, 501 METRES, PAR 5

Hit driver on this long par 5 to wide open fairway. A genuine 3 shooter for most players but a good birdie opportunity for those that can bust their first 2 shots. The green is well protected so a lay-up may be the best option to attack the flag with a solid shot.

HOLE 7, 147 METRES, PAR 3

A shortish but tricky par 3 with a large water hazard short and left of green. This multiple tiered putting surface will test all players if you don't leave your ball on the correct level.



HOLE 8, 359 METRES, PAR 4

Another strong driving hole that demands placement off the tee. A very long green, so correct distance with your approach is imperative. The green itself is largely flat but the length of putt can be the biggest challenge.

HOLE 9, 354 METRES, PAR 4

A strong driving hole that demands you get it long enough to have a look around the corner at the green. A large green that has a vast slope from back to front awaits when you reach it. Heavily protected by bunkers ensures your direction upon approach is accurate.

HOLE 10, 365 METRES, PAR 4

A strong tee shot is required where only the longer hitters can reach the upper limits of the hill. The green is well protected on the approach by bunkers and water if you happen to go long. One of the more undulating greens awaits when you get to the putting surface.

HOLE 11, 178 METRES, PAR 3

A straightforward, but still lengthy, par 3 awaits with a generous, but quite receptive green. The key to this hole is avoiding the large bunker short of the green, an approach from anywhere else around the green is quite simple in comparison.

HOLE 12, 438 METRES, PAR 5

A short par 5 allows the bigger hitter to get home in two. Alternatively, lay up with mid to long iron leaving you with a simple pitch into the elevated green which slopes right to left and quite severely from back to front. Avoid the cross bunker as well as the bunker closer to the green as they will both provide a tricky length bunker shot to reach the putting surface.

HOLE 13, 377 METRES, PAR 4

A wide open, downhill par 4 which is best played with Driver to the left side of fairway leaving an approach shot with a mid-iron to a large green sloping from back to front. One of the more friendly holes is always a good opportunity to score.



HOLE 14, 140 METRES, PAR 3

The par 3 signature hole has water to the right and front of the green, usually played with a short to mid iron to a generous green. There is generous amounts of grass to the left of the green, but then you are faced with an approach shot with water past the flag always offering up a challenge.

HOLE 15, 380 METRES, PAR 4

A tough par 4 with a penalty area to the right. A large landing area off the tee will leave a mid-iron to a large green with many possible hole locations. Be careful to not catch the green side bunkers as they will make it a challenge to find the green let alone recover your par.

HOLE 16, 470 METRES, PAR 5

A tricky par 5 with trouble down the right-hand side all the way to the green. Driver off the tee then a lay-up to avoid penalty area short right of the green will create a short iron into a large three-tiered green that slopes back to front. Endeavour to leave your approach below the hole. Two putts here is a great result.

HOLE 17, 356 METRES, PAR 4

OOB right off the tee takes your eyeline to the left but this is greeted with the storage dams for the Club's irrigation, so aesthetically it is a challenge off the tee. Any club that finds the fairway is a great result to approach a relatively narrow green. Putting is possibly the easiest challenge on your penultimate hole of the 9.

HOLE 18, 313 METRES, PAR 4

This short par 4 has OOB all the way down the right of the hole, taking 3 wood or long iron for placement is the safe option leaving a short iron over a water hazard to a large green that slopes from back to front and is heavily protected by bunkers.

HOLE 19, 364 METRES, PAR 4

Any club off the tee that finds the fairway, avoiding the bunker down the left, is a great result here. From the fairway the green is relatively open from here but some subtle undulations on the green ensure your concentration is kept to the end.

HOLE 20, 340 METRES, PAR 4

A tee shot aimed to right of large tree in the middle of the fairway (this tree is rumoured to be around 300 years old) will leave a lengthy shot to the green. For the longer hitters the line is to the left of this tree, but more trouble awaits if your aim is too far left. The green is protected well by bunkers but is quite flat, making your putt a little easier.

HOLE 21, 451 METRES, PAR 5

This short par 5 is reachable in for the longer hitter but it is a risk reward tee shot as a bunker/water carry is essential to have a look at the green. A smallish green awaits your approach, with a miss on any side giving your chip plenty to think about.

HOLE 22, 335 METRES, PAR 4

A short par 4 – usually played with 3 wood off the tee for placement – will leave a short iron into a narrow green with a water hazard to the right and a large bunker to the left. Keep an eye on the flag position as you can be left with a lengthy putt.

HOLE 23, 190 METRES, PAR 3

Toughest par 3 on the course requiring a long iron or fairway wood, with hazards surrounding the green. Causes a lot of trouble for the wood ducks. The play is to leave it just short of the green but don't miss it in the bunker as you will be left with a lengthy bunker escape with water behind any flag.

HOLE 24, 348 METRES, PAR 4

This tight par 4 with penalty area all the way down the left. Driver off the tee should leave you with a decent look at the tricky elevated green that slopes from back to front which always offers a challenge for the putter.



HOLE 25, 161 METRES, PAR 3

A simple uphill par 3 with a deep greenside bunker on the right. The large green allows for some tricky pin placements. Take an extra club off the tee to mitigate the change in elevation from tee to green.

HOLE 26, 450 METRES, PAR 5

A shortish par 5, but don't be deceived by its length. There is plenty of trouble to be found all the way along each side. Hit the left-hand side of the fairway from the tee to achieve best possible approach into green complex. The green is quite long and narrow with a couple of strategic bunkers placed to catch any errant approach.

HOLE 27, 321 METRES, PAR 4

This short par 4 has a penalty area all the way down the left side. A Driver or 3 wood off the tee will leave a simple short iron to a two tiered green. Great opportunity to finish the round with a birdie.

Delves & Wain Solicitors & Conveyancers

Your Conveyancing *Experts*

- Conveyancing & Property
- Wills & Estates
- Criminal Law & Traffic Prosecutions
- Family Law
- General Litigation
- Compensation Law

Call **02 4472 5988** | admin@delvesandwain.com.au | 34b Orient St, Batemans Bay 2536

GOLF SHOP & TUITION

THE PERFECT PLACE TO ELEVATE YOUR GAME.

Catalina Club's Golf Shop is your hub for everything you need before stepping onto the fairways. Staffed by knowledgeable, friendly professionals, it's the place where preparation meets genuine South Coast hospitality — ensuring every golfer is set for a great day on the course.

The shop offers an extensive range of products from the world's leading golf brands, including clubs, balls, gloves, apparel for men and women, and a curated selection of training aids. Whether you're updating your gear, refreshing your wardrobe, or seeking expert advice, the team is ready to assist.

For visitors, premium Titleist and Callaway hire sets are available, along with a fleet of motorised carts for those wishing to save their

energy for the game. A full club repair service is also offered to keep your equipment performing at its best.

Catalina is also home to a highly regarded team of PGA Professionals, including an Australian PGA Club Champion of the Year, providing coaching for golfers of all levels. Private lessons, group clinics, junior development programs, and Empower Golf sessions for players with disabilities ensure every golfer has access to pathways for improvement.

Whether you want to find more fairways, strike your irons with confidence, sharpen your short game, or refine your putting, tailored lesson plans ensure real, measurable progress — and a more enjoyable experience on the course.

For more information about Golf Shop services or coaching, email golfshop@catalinaclub.com.au or call (02) 4472 4386.



HOW TO JOIN

THE PERFECT PLACE TO BELONG.

Becoming a member of Catalina Club means joining a community shaped by 100 years of golf, coast, and connection. With a world-class 27-hole course, beautifully refurbished clubhouse spaces, and a relaxed coastal atmosphere, Catalina offers a membership experience that feels both premium and welcoming – the perfect place to make golf part of your everyday life.

Members also enjoy the benefits of the Catalina Rewards Program, earning points every time they visit, play, dine, drink, shop, and swipe their Catalina Member Card. Points can be redeemed throughout the Club, making every visit more rewarding.



MEMBERSHIP CATEGORIES

CATALINA CLUB OFFERS A RANGE OF MEMBERSHIPS TO SUIT EVERY STAGE OF LIFE AND EVERY STYLE OF PLAY:

7-DAY GOLF MEMBERSHIP

Our most popular category. Enjoy unrestricted access to all 27 holes, the full golfing program, and the Club's premium clubhouse facilities.

UNDER 35 GOLF MEMBERSHIP

For golfers aged 23-34, offering full 7-day access at a reduced rate.

COUNTRY GOLF MEMBERSHIP

For golfers living 100km or more from Catalina Club, who hold a 7-Day or Weekday membership at another club. Includes full 7-day Catalina playing rights.

INTERMEDIATE GOLF MEMBERSHIP (18-22 YEARS)

Full 7-day access for young adults ready to advance their game.

JUNIOR GOLF MEMBERSHIP (UNDER 18)

For young golfers with developing talent. Includes competition access and encourages lifelong skills and confidence.

CADET GOLF MEMBERSHIP (UNDER 18)

Ideal for beginners. Cadets enjoy supervised social play with a responsible adult.

VETERANS MEMBERSHIP (55+)

For golfers aged 55 and over who are already Golfing Members. Enjoy additional camaraderie and community through the Veterans group.

SOCIAL MEMBERSHIP

For those who simply love the clubhouse experience. Includes access to dining, bars, café, and Catalina Rewards – with savings that begin from your very first visit. Available in one-, three-, and five-year options and is only \$10 per year.

BECOME A MEMBER

Details on subscription rates, benefits, and Membership application forms can be found at catalinaclub.com.au. All memberships are issued by our main reception.

For assistance, contact Reception on (02) 4472 4022 or email info@catalinaclub.com.au.

MEMBER BENEFITS

THE ULTIMATE WAY TO ENJOY ALL THAT CATALINA CLUB HAS TO OFFER IS BY BECOMING A MEMBER.

Here are just a few reasons why choosing to join could be the best decision you make all year:

- Belong to a Club that is loved by its members and at the heart of its local community
 - Genuinely a family-friendly Club and where all can feel welcome
- A wonderful location to entertain guests, both on the course and in the Clubhouse
 - Excellent Café and Restaurant food available every day of the week.
- Enjoy regular Live Entertainment or watch major sporting events on the big screen
- Instant discounts on Food and Beverages from the minute you become a member
- Access to Catalina Club Top 100 Australian Public Access Golf Course, a highly-rated 27-hole championship course, driving range and practice putting and chipping facilities.
 - Convenient bookings for competition golf via MiClub app
 - Get an official golf handicap recognised worldwide
- The chance to represent the Club in team pennant competition
- Entry into weekly Club competitions and Honour Board events
- Junior golfing clinics, fostering the next generation of golfers
- Providing high quality golfing brands in the Golf Shop with knowledgeable staff
 - PGA-qualified Club Professionals available for tuition
- Regular communication from the Club with weekly eNewsletter
- Reciprocal arrangements with selected golf clubs in NSW, Queensland and ACT.



Bespoke funerals in Batemans Bay and beyond

Our caring team of funeral directors are here to help you create a personalised farewell that reflects your loved one's life and honors their memory.

CONTACT 02 4472 8886

20 Old Princes Hwy, Batemans Bay



BATEMANS BAY & MORUYA
DISTRICT FUNERALS



NAROOMA DISTRICT
FUNERALS

SPECIAL GOLF EVENTS

THE PERFECT PLACE TO WITNESS THE FUTURE OF AUSTRALIAN GOLF.

Catalina Club is proud to host some of the South Coast's most prestigious tournaments, attracting rising stars, seasoned competitors, and passionate spectators to one of Australia's most scenic coastal courses.

THE SOUTH COAST OPEN

Returning in 2026, the South Coast Open is a highlight of the national golfing calendar. Played across a rotating 18-hole layout over three dynamic days – opening with the popular Pro-Am – it is a must-see event for golf lovers.

As an official NSW Open Regional Qualifying Tournament, the South Coast Open offers spectators an up-close view of Australia's emerging talent in a professionally run, televised environment. The atmosphere blends experience, ambition, and raw potential, creating three exhilarating days of competition on Catalina's parkland fairways.

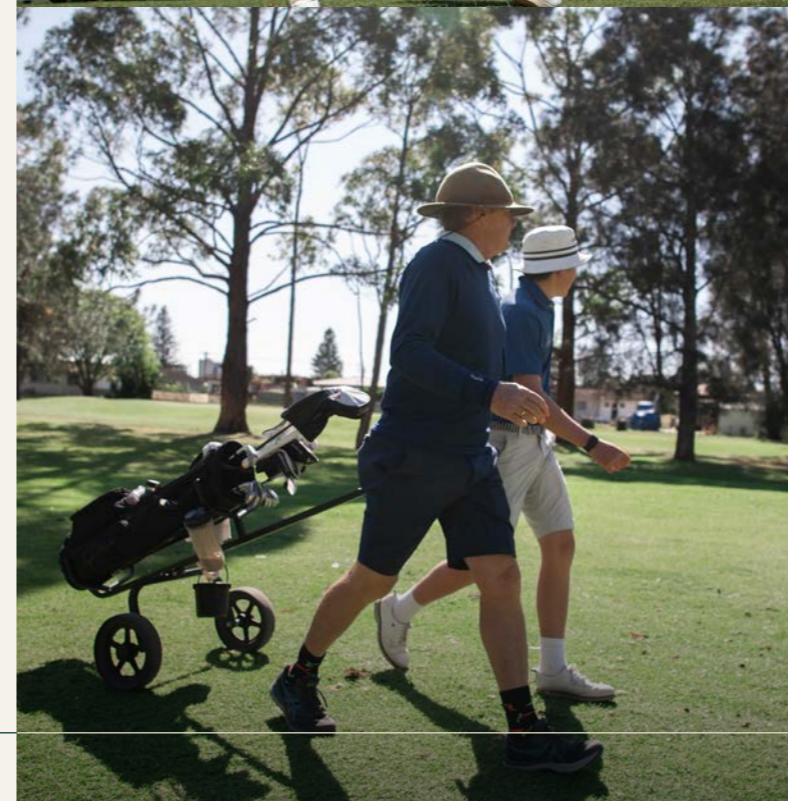
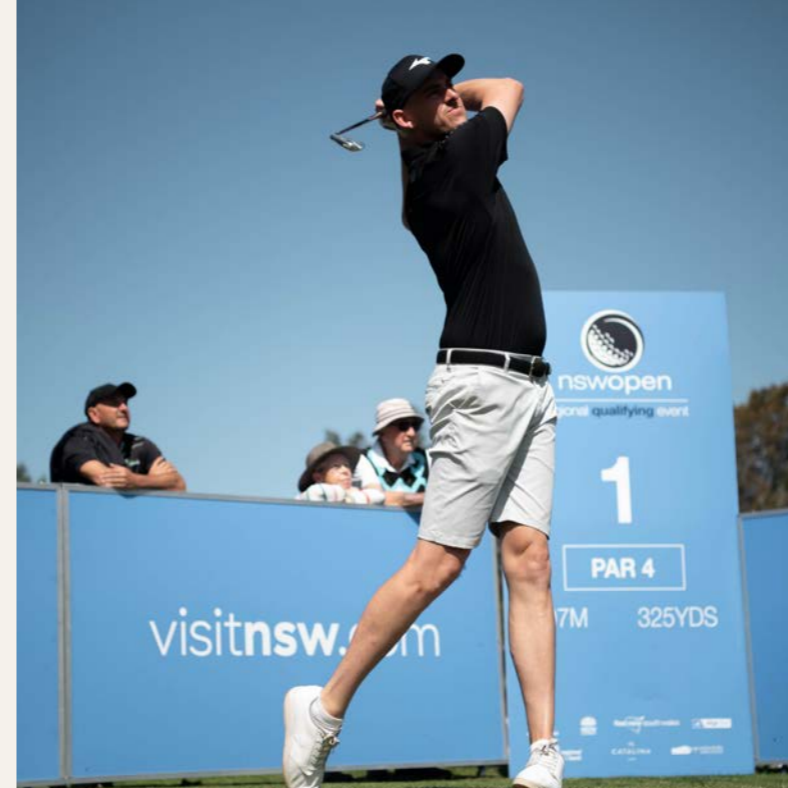
For dates, entry details, and the full tournament schedule, visit catalinaclub.com.au.

A SEASON OF STANDOUT EVENTS

In addition to the South Coast Open, Catalina proudly stages a full calendar of major tournaments each year, including:

- Ladies Open
- Catalina Classic
- Batemans Bay Open
- Catalina Seniors Open
- Clyde Auto Junior Open
- Jack Newton Junior Golf – South Coast Junior Masters

Each event showcases the depth of talent across all levels of the game, reinforcing Catalina's reputation as one of the region's premier golf destinations.



JUNIOR GOLF

THE PERFECT PLACE TO LEARN, PLAY, AND GROW.

Catalina Club is proud to nurture the next generation of golfers, offering a welcoming and inspiring environment where juniors can discover the game, build confidence, and develop lifelong skills. The Catalina Club Junior Golf Team is one of the largest and most dynamic in the region, with rising stars progressing through the ranks, competing – and winning – in adult tournaments, and even securing sporting scholarships around the world.

With programs designed for girls and boys of all ages, Catalina is committed to making golf fun, accessible, and deeply rewarding.

All new entrants begin in the Cadet Program, advancing to the Junior Program once they reach independent competency. Everyone is welcome – no matter their experience, background, or stage of their sporting journey.

CADET & JUNIOR DEVELOPMENT PROGRAMS

Weekly coaching sessions are delivered by the Club's qualified PGA Professionals and supported by dedicated volunteers – the Catalina Cadet Masters – creating a safe, social, and encouraging learning environment.

- AGF Junior Girls Program: Tuesday afternoon
- Cadet Sessions: Wednesday afternoons
- Junior Clinics: Thursday afternoons

These sessions help young players refine their technique, grow their confidence, and build friendships – all while being introduced to the excitement of competitive golf as their skills develop.

For more information, contact the Golf Shop on (02) 4472 4386, or visit the Junior Golf page at catalinaclub.com.au/golf/juniors-cadets.

BUILDING SKILLS FOR SPORT AND LIFE

Coaching covers all essential fundamentals, including grip, stance, posture, alignment, ball position, and both long and short game development. Equipment can be provided, ensuring every child has the opportunity to participate.

Beyond technique, golf instils qualities that last a lifetime. It teaches focus, etiquette, resilience, problem-solving, and mental arithmetic – all while keeping kids active outdoors. The earlier they start, the more years they have to enjoy a sport that stays with them for life.



VISITORS & SOCIAL GOLF

EXPERIENCE ONE OF AUSTRALIA'S PREMIER COASTAL COURSES.

If you've never played at Catalina Club, it's difficult to capture in words the thrill that awaits. With a fantastic clubhouse experience, immaculate fairways, immaculate fairways, and the warmest of welcomes, Catalina offers a golfing experience that stays with you long after the final putt drops.

Blessed with Eurobodalla's enviable year-round climate, visitors can enjoy our pristine Top 100 Public Access Course seven days a week.

SOCIAL GOLF & TEE TIMES

Tee times for visitors and social players vary in line with the Club's member competition schedule and special events. Whether you're here for a relaxed social round or eager to test yourself on championship lay-out, our team will help guide you to the perfect time to play.

EVERYTHING YOU NEED FOR A GREAT DAY ON COURSE

For full details on upcoming tournaments, fixtures guides, cart and equipment hire, green fees, golf shop brands, repair services and all your sporting goods needs, visit catalinaclub.com.au/golf.

Golfers registered with the MiClub app can also enjoy easy access to booking portals, club news, weather information and more.

BOOK YOUR ROUND

To secure your tee time, contact the Golf Shop:
Phone: (02) 4472 4386 Email: golfshop@catalinaclub.com.au

Once you've played Catalina, you'll understand why so many visitors return year after year. And why so many say one round is never enough in the perfect place... Grab your Catalina Club merchandise on your visit from the Golf Shop or the Gift Shop. To see what Catalina offers in terms of mementos, visit catalinaclub.com.au/gift-shop



HOW TO FIND US

THE ICONIC CATALINA CLUB IS EASY TO FIND ON BEACH ROAD, BATEMANS BAY, ALONG THE STUNNING SOUTH COAST OF NSW.

Just 1.5 km south of the Batemans Bay CBD, the Club is a short drive from the heart of town and perfectly situated for visitors exploring the region.

We're 147 km from Canberra and 276 km south of Sydney, making Catalina an ideal destination for a day trip or a weekend getaway.

For those arriving by air, Canberra International Airport offers

convenient access, while Moruya Airport provides local flights from Sydney and Canberra – including scenic seaplane options for a truly memorable arrival.

Catalina also welcomes visitors arriving by water. Regular cruise ships enter the Clyde River estuary, and private boat tenders can collect golfing guests, offering exclusive packages that combine travel, relaxation, and the full Catalina experience.

OUR OPENING HOURS

CLUBHOUSE

Monday to Saturday – 9am-2am

Sunday – 8am-2am

Christmas Day – closed

RESTAURANT

Monday to Saturday – 11:30am-2:30pm / 5pm-8:30pm

(9pm in summer)

Sunday – 8am-11am / 11:30am-2:30pm / 5pm-8:30pm

(9pm in summer)

GOLF SHOP & COURSE

Monday to Sunday – Summer 6am-7pm / Winter 6am-6pm

** Operating hours are subject to change at management discretion.*

Please refer to the website for all seasonal changes.

CLUBHOUSE

For information on memberships and member services, please refer to the Join page of the website. For restaurant bookings please use the booking function on the Dining page of the website, for all Functions bookings please refer to the Functions page of the website and for all general enquiries:

info@catalinaclub.com.au

(02) 4472 4022

GOLF SHOP

For golf bookings, golf memberships, equipment hire and clinics:


golfshop@catalinaclub.com.au

(02) 4472 4022

Trust a local for business insurance

Elders Insurance agents are part of your local community. We're here to help you understand our range of business insurance options and answer your questions, face to face or over the phone.

Contact Sam Millynn to discuss our policies and to receive a quote.

02 4478 2377  Elders Insurance Batemans Bay



Insurance



CATALINA

CLUB

CATALINACLUB.COM.AU